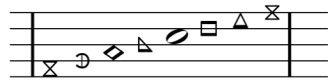


# OLD HARP

Number 39  
2012



*The New Harp of Columbia  
Annual Newsletter*

## WHERE'D WE COME FROM? WHERE'D WE GO?

*(Perspective by Ann Strange)*



The Old Harp tradition was spread around the world thanks to our appearance on Knoxville's WDVX radio's Blue Plate Special.

I think of our "year" starting with the Sugarlands Visitors Center singing as part of the "Festival of Christmas Past" when the mountains feel like they did before the national park. We still have many of our traditional singings in or near

the Great Smoky Mountains National Park—Pigeon Forge and Sevier County, Townsend and Blount County, Cades Cove and Wears Valley. I am excited that this year we will return to the Little Greenbrier Schoolhouse where Robin Goddard is the "schoolmarm" and loves to share Old Harp with her visitors each week along with the spelling bee competition. Robin also is our hostess at the singings at



Leaders at Camp DoReMi.

the Townsend Spring Festival and Cades Cove, where we recently moved from the Missionary Baptist to the Primitive Baptist church but since we're the congregation, the singing is just the same. We don't sing in some of the places we used to and I miss them although we certainly have a busy calendar. The Museum of Appalachia wanted a more regular performance than our Saturday morning singings and we had a good discussion about it but we couldn't work out the schedule and tickets. We don't have a Christmas singing at Kathy Jones because, after surviving brain cancer for many years, she passed away this year. We also lost Connie Clabo but sang at his funeral. We happily welcomed three babies this year—Ethan LAWRENCE Green, Claire Annaliese White, and James Jeremy Shipp.

(continued on back)

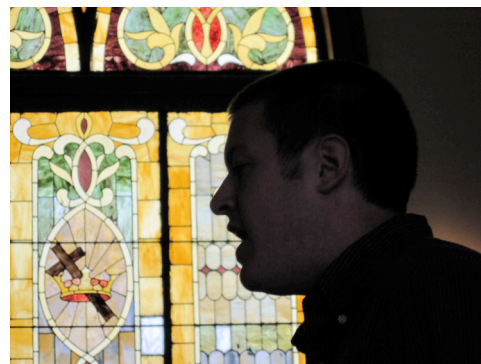
As much as the people who sing Old Harp have changed over time, so have the places where we sing. From huge gatherings and popular Singing Schools in the mountains, to the current monthly and annual singings in various counties, this tradition has deep roots in East Tennessee. But our ancestors would be more than a little surprised to know this tradition is now "performed" live on the radio and TV! These days, more people get their Old Harp information from the internet or the listserve or Facebook than by mail or phone calls. And although East Tennesseans have always welcomed visitors, now we also go visit other singings and learn about other shaped-note traditions.



Our annual singing at Dollywood in October at the chapel some Old Harp singers helped donate and restore.

where we recently moved from the Missionary Baptist to the Primitive Baptist church but since we're the congregation, the singing is just the same.

We don't sing in some of the places we used to and I miss them although we certainly have a busy calendar. The Museum of Appalachia wanted a more regular



Andrew Whaley leads at the Laurel Theatre in Knoxville, Tennessee, traditional home of the Epworth Old Harp singers.

**Old Harp Newsletter • ISSN No. 1546-038X**

Founder: Larry Olszewski; Publisher: Friends of The New Harp of Columbia; Editor: Ann Strange. Thanks to contributors and all the singing coordinators.

Board Members of the Friends of The New Harp of Columbia: President Robin Goddard, Vice President David Sarten, Treasurer Joe Sarten, Secretary Ann Strange, Claudia Dean, and Chaz Barber.

**Financial Information from Treasurer Joe**

**Sarten:** 2011 income was \$1,304.07, down approximately \$335.00 from 2010. 2011 expenses were \$797.30, down approximately \$560 from the previous

year. This continued the downward trend in income and expenses from 2009. However, net income for 2011 was \$506.77, almost double the previous year's income. At the end of 2011 FNHC had \$7,439.42 in assets including checking accounts, cash on hand, and book inventory.

Special thanks goes to three individuals who made significant financial contributions in 2011:

Charles Barber, Janet Whaley in honor of Andrew Whaley, and the Blount Mansion Association.

Please make contributions via Pay Pal at oldharp.org or send checks to Old Harp, 307 Lake Forest Drive, Knoxville, TN 37920.

---

---

**WEB SITES OF INTEREST**

[www.oldharp.org](http://www.oldharp.org) (the official web site)  
[www.newharpofcolumbia.blogspot.com](http://www.newharpofcolumbia.blogspot.com) (we welcome your contributions)  
[www.christianharmony.org](http://www.christianharmony.org) and [www.thechristianharmony.com](http://www.thechristianharmony.com) (NC, Ala, GA, seven shapes)  
[www.campdoremi.com](http://www.campdoremi.com) (great learning to sing opportunity)  
[www.oldfieldssingers.com](http://www.oldfieldssingers.com) (Upper East Tennessee, seven shapes)  
[www.fasola.org](http://www.fasola.org) (Sacred Harp/four shapes)  
[www.joebeasleyfoundation.org](http://www.joebeasleyfoundation.org) ( non-profit organization promoting the shaped-note tradition)  
<http://mywebpages.comcast.net/david.l.carlton/harpeth/index.htm> (Nashville Sacred Harp singers)  
<http://www.youtube.com/user/diap842#p/u> (Jonathon Smith's great videos of singings)

---

---

**TENNESSEE OLD HARP MONTHLY SINGINGS IN 2012**

**GREENE COUNTY Franklin Singers Monthly Singings** at Cumberland Presbyterian Church, Greeneville  
**LAST SUNDAY OF THE MONTH at 3:00 p.m.**

Jan. 29, Feb. 26, March 25, April 29, May 27, June 24, July 29, Aug. 26, Sept. 30, Oct. 28, Nov. 25

**KNOX COUNTY Epworth Singers Monthly Singings** at the Laurel Theatre, Knoxville  
**SECOND SUNDAYS at 6:30 p.m.**

Feb. 12, May 13, June 10, Aug. 12, Sept. 9, Oct. 14, Nov. 11

**OLD COLLEGE Monthly Singings** at St. Paul's Episcopal Church, Athens  
**THIRD TUESDAYS at 6:00 p.m.**

Jan. 17, Feb. 21, March 20, April 17, May 15, June 19, July 17, Aug. 21, Sept. 18, Oct. 16, Nov. 20

**SEVIER COUNTY Monthly Singings** at Middle Creek United Methodist Church, Pigeon Forge  
**THIRD TUESDAYS at 7:00 p.m.**

Jan. 17, Feb. 21, March 20, April 17, May 15, June 19, July 17, Aug. 21, Sept. 18, Oct. 16, Nov. 20

---

---

Books and CD Sales: *The New Harp of Columbia* is available at singings for \$26 (make check payable to "Old Harp") and by mail for \$30 (send check to 307 Lake Forest Drive, Knoxville, TN 37920).

The "Singing School/Practice" CD which breaks songs into the four parts for help in learning, is available for \$9. The "Rise My Soul" CD, a 2001 recording from Headrick Chapel, is available for \$11 (plus \$1 for mailing to same address as above.)

*To be added to the Old Harp listserv and get monthly updates, send an email request to [chris.stoddart@gmail.com](mailto:chris.stoddart@gmail.com)*

## TENNESSEE OLD HARP ANNUAL SINGINGS IN 2012

Date	Day	Time	Potluck?	The Singing
Jan. 8	Sunday	2:00	No	Wilderness Wildlife Week, Music Road Hotel, Violin Room, Pigeon Forge, Contact: David Sarten or Veta King.
March 11	Sunday	10:00	Yes	Epworth Annual Singing during the Jubilee Festival, Laurel Theatre, Knoxville. Contact: Tina Becker.
April 1	Sunday (1st)	2:00	No	Oldhams Creek Missionary Baptist Church, 3629 Boogertown Road, Sevier County. Contact: Veta King or Hal Wilson.
April 8	Sunday	5:30	Yes	Easter Singing at Bill Gooch and Meg Mabbs home, 4401 Alta Visa Way, Knoxville.
April 15	Sunday	2:00	No	Tuckaleechee United Methodist Church, Townsend. Contact: Tom Taylor.
May 5	Saturday	3:30	No	Townsend Spring Festival, Heritage Center, Townsend. Contact Robin Goddard.
May 6	Sunday (1st)	2:00	No	Middle Creek United Methodist Church, Sevierville. Contact: David Sarten
May 13	Sunday	6:30	Yes	<b>Farewell party for Barbara Kemper</b> and regular Second Sunday singing. Laurel Theatre, Knoxville, TN.
May 20	Sunday (3rd)	2:30	No	Old College Singing at St. Paul's Episcopal Church, Athens, TN. Contact: Cora Sweatt.
June 2	Saturday (1st)	10:00	Yes	Franklin singing at New Bethel Cumberland Presbyterian Church, Greeneville, TN. Contact: Jeff Farr.
June 10	Sunday	5:30	Yes	<b>Annual Meeting</b> of the Friends of The New Harp of Columbia and regular Second Sunday Singing. Laurel Theatre, Knoxville, TN. Contact: Tina Becker.
June 24	Sunday (4th)	12:00	Yes	Beech Grove Primitive Baptist Church, Sevier County, Contact: Sharee Green
July 8	Sunday	2:00	No	Little Greenbrier Schoolhouse. Contact Robin Goddard.
Aug. 9-11				Camp Do-Re-Mi, Wildacres Resort, Little Switzerland, NC. www.campdoremi.com
Aug. 19	Sunday(3rd)	2:30	No	Cades Cove Primitive Baptist Church, Great Smoky Mountains National Park. Contact Robin Goddard or Tom Taylor.
Sept. 1	Saturday	10:00	Yes	Etowah United Methodist Church, Etowah, NC. Three-book singing. Contact: Scott Swanton.
Sept. 2	Sunday	2:00	No	Wears Valley United Methodist Church, Sevier County. Contact Bruce Wheeler.
Sept. 9	Sunday	5:30	Yes	<b>Music of Appalachia class</b> from the University of Tennessee and regular Second Sunday singing. Laurel Theatre, Knoxville, TN. Contact: Tina Becker.
Sept. 23	Sunday (4th)	10:00	Yes	Headrick Chapel, Wears Valley, Sevier County. Contact David Sarten or Bruce Wheeler or Ann Strange.
Oct. 7	Sunday (1st)	2:00	No	Valley View Baptist Church, Wears Valley, Sevier County. Contact: Bruce Wheeler
Oct. 21	Sunday	2:00	No	Dollywood Singing, Pigeon Forge, Contact: David Sarten or Veta King.
Oct. 28	Sunday (4th)	2:00	No	Maryville College, Center for Campus Ministry, reception afterwards. Contact: Tom or Nan Taylor and Nancy Olsen.
Nov. 3	Saturday	10:00	Yes	Sycamore Shoals State Park, Elizabethton, TN, The Old Fields singers host a two-book singing. Contact: Don Wiley.
Nov. 21	Wednesday	6:30	Yes	<b>Larry Olszewski Memorial Singing</b> during the traditional Thanksgiving Eve potluck and Old Harp singing. Laurel Theatre, Knoxville, TN. Contact: Tina Becker.
Dec. 8	Saturday	9:30	No	Sugarlands Visitors Center, National Park, Contact Paul Clabo.
Jan. 13, 2013	Sunday	2:00	No	Wilderness Wildlife Week, Music Road Hotel, Pigeon Forge, Contact: David Sarten or Veta King.

### CONTACT INFORMATION

Tina Becker: (865) 982-7777 loudsinger@gmail.com  
 Paul Clabo: (865) 453-5847  
 Jeff Farr: (423) 620-8267;  
 summersfarr@embarqmail.com  
 Robin Goddard: (865) 982-6148;rlgoddard@aol.com  
 Bill Gooch and Meg Mabbs: (865) 522-0515;  
 goochbill@bellsouth.net  
 Sharee Green: (865) 654-3557;  
 sharee.green@blountk12.org  
 Veta King: (865) 428-1375;king2717@bellsouth.net  
 Kathleen Mavournin: (865) 691-9506; kmav@icx.net

Nancy Olsen: (865) 983-7631; bryne\_olsen@yahoo.com  
 David Sarten: (865) 428-0874; D\_Sarten@msn.com  
 Ann Strange (865) 573-4468; strange@esper.com  
 Cora Sweatt: (423) 745-0248  
 Scott Swanton: (828) 891-3245; prmbap@hotmail.com  
 Tom and Nan Taylor: (865) 984-8585;  
 ttaylor706@aol.com; nanktaylor@yahoo.com  
 Bruce Wheeler: (865) 428-2239; wwheele1@utk.edu  
 Don Wiley: (423) 341-8893; drw509@embarqmail.com  
 Hal Wilson: (865) 436-2590

## Where'd we come from, Where'd we go? *(continued from front page)*

We didn't sing in Pittman Center last year but the Wilderness Wildlife Week is a big hit and David Sarten is a fine moderator there and also at the monthly Sevier County singings which continue to grow. When I first started singing, we met at Helen Hutchison's house in Knoxville every Sunday night. When she passed, we moved to the Laurel Theatre but not weekly. Now we just meet once a month and are asked to pay a modest rent but it is still the home of the Epworth Old Harp singers and Tina Becker is a fine President. We continue to miss Larry O but combining his annual memorial service with the Thanksgiving Eve singing has proved popular.

I'm sorry we don't have a monthly singing in Blount County right now but the annual singings are going strong.

I believe Cora Sweatt, in Athens, Tennessee, sells more Old Harp books than anybody else. She is a tireless promoter of Old Harp even though her family is well known in the Sacred Harp tradition and I regret that we don't support her enough. She organizes the Old College singers who last year sang for the Polk County Historical Society, the First Baptist Church Sunday service, and an old fashioned downtown Christmas, and have plans to sing for schools and a music club this year.

Eddie Mash is often crossing the country each weekend looking for singings of any kind, preferably the ones that last all day or two days. He was the Chairman for the United Sacred Harp Convention held in Nashville last year and was a good representative for East Tennessee. He also is an organizer of Camp Do Re Mi held in August in the mountains of North Carolina. Tennessee continues to hold the number one spot for attendance at the Camp. Several of us have gone each year to learn more, share more, and spend three days with the best folks in the world in one of the prettiest

places in the world. Everyone is welcome and I highly encourage you to make this a priority if you haven't ever attended--it may sell out.

I know we all really appreciate the people who organize the monthly and annual singings who take time to host the event, welcoming everyone, making sure books are available, coordinating food, setting up and taking down tables and chairs, and sweeping up after the singing is over. Please remember to let them know how much you enjoyed the singing and support them by showing up. You know who is responsible for each singing by the "Contact" information on the calendar.

The Board of Directors continues to monitor the book situation because our book will need to be reprinted pretty soon. Your donations are spent to keep this tradition alive which involves having books to loan at each singing and books for sale. This annual newsletter is pretty expensive to print and mail also.

The tradition continues because enough people care to show up and sing and encourage others to sing. We had fun sharing the tradition on the radio with the WDVX Blue Plate Special and singing at Blount Mansion in Knoxville which was included in WBIR's Heartland Series holiday TV special. Participation in this tradition can lead to surprising places!

We could sure use some help with social media information about Old Harp singing. If you can help upload photos and videos and make clickable links for each singing, we could use your skills. And I can't do this newsletter forever by myself. It may be the year you decide to become more involved with this tradition. As someone that Larry recruited and pushed along, I can guarantee you that you will reap more than you sow. So thank you for continuing this tradition and let me know if you want to get involved in other ways.



---

*From:*

Old Harp  
307 Lake Forest Drive  
Knoxville, TN 37920